

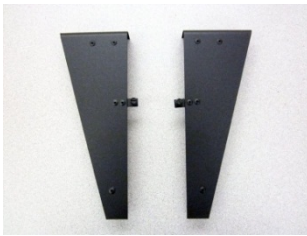


**Make sure to have the media kit and firebacks (if used) available at the time of installation. Components from the media kit are used during burner installation.**

### **Compatibility**

- DVS GSR NB Insert
- DVS GS NB (AU) Inbuilt

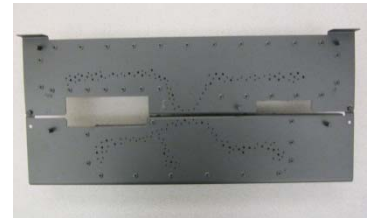
### **Packing List**



Left and Right Ember Trays



Air Deflector



Front and Rear Burner Assemblies

### **Order of Installation**



**If using LP (Propane), convert the appliance prior to installing the burner (see owner's manual).**

#### **Driftwood Log Set (94500571) or Fyre-Stones Set (94700762)**



When using Driftwood or Fyre-Stones media, note that the only compatible firebacks are stainless steel or enamel.

- Remove the glass frame.
- Disable the accent light (see instructions on page 4).
- Install the burner (see instructions on page 3).
- Attach the air deflector (see instructions on page 4).
- Install the firebacks (if used).
- Install the media (see instructions included with the media kit).

#### **Traditional Log Set (94500991) \***

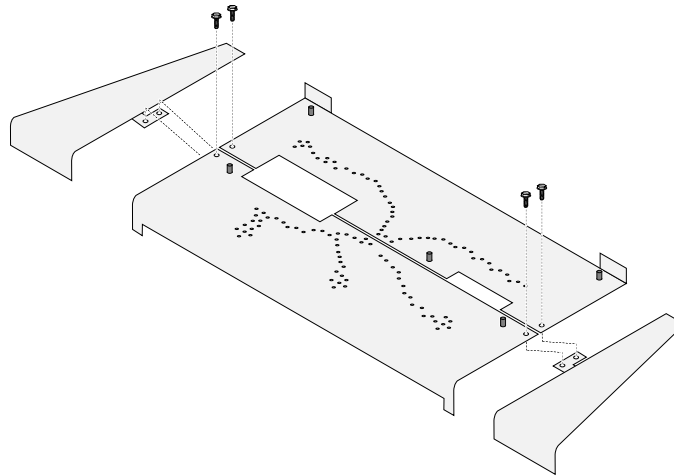
- Remove the glass frame.
- Install the burner (see instructions on page 3).
- Attach the air deflector (see instructions on page 5).
- Install the firebacks (if used).
- Install the media (see instructions included with the media kit).

\* NOTE: If using the Traditional Log Set **with stainless steel or enamel firebacks**, you will need to conduct the following order of installation:

- |   |                                |
|---|--------------------------------|
| a) Remove the glass frame.                | e) Bend the accent light up.   |
| b) Attach the air deflector (see page 5). | f) Install the burner.         |
| c) Bend the accent light down.            | g) Install the side firebacks. |
| d) Install the rear fireback.             | h) Install the media.          |

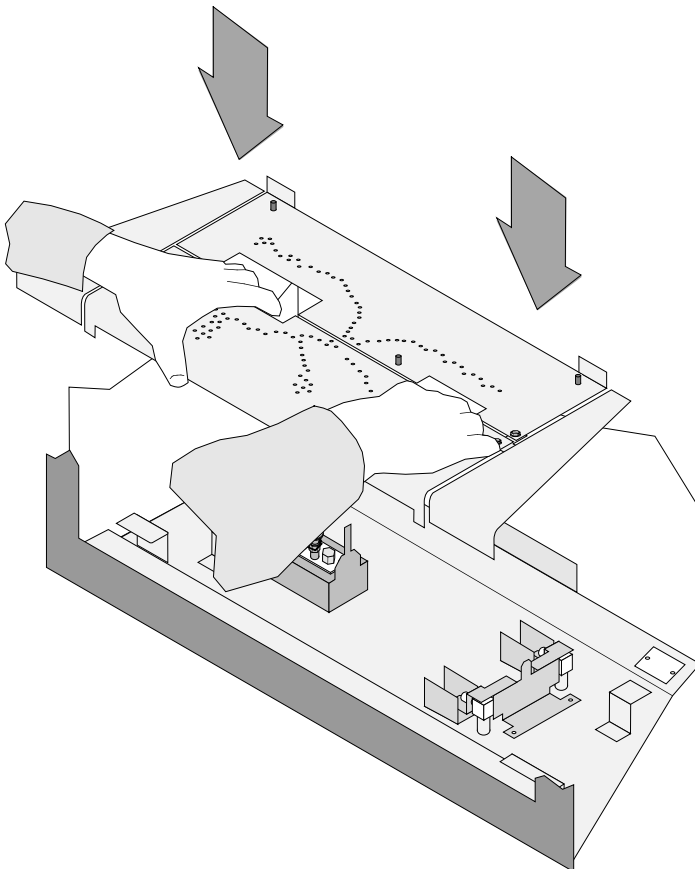
## **Burner Installation**

Attach the burners and burner trays together as shown below. The screws are shipped pre-attached to the burners.



Install the burner assembly as shown below.

**NOTE:** Make sure the burner is fully seated over the orifices. The pilot hood should be slightly above the burner surface and align with the burner ports (see photo below).



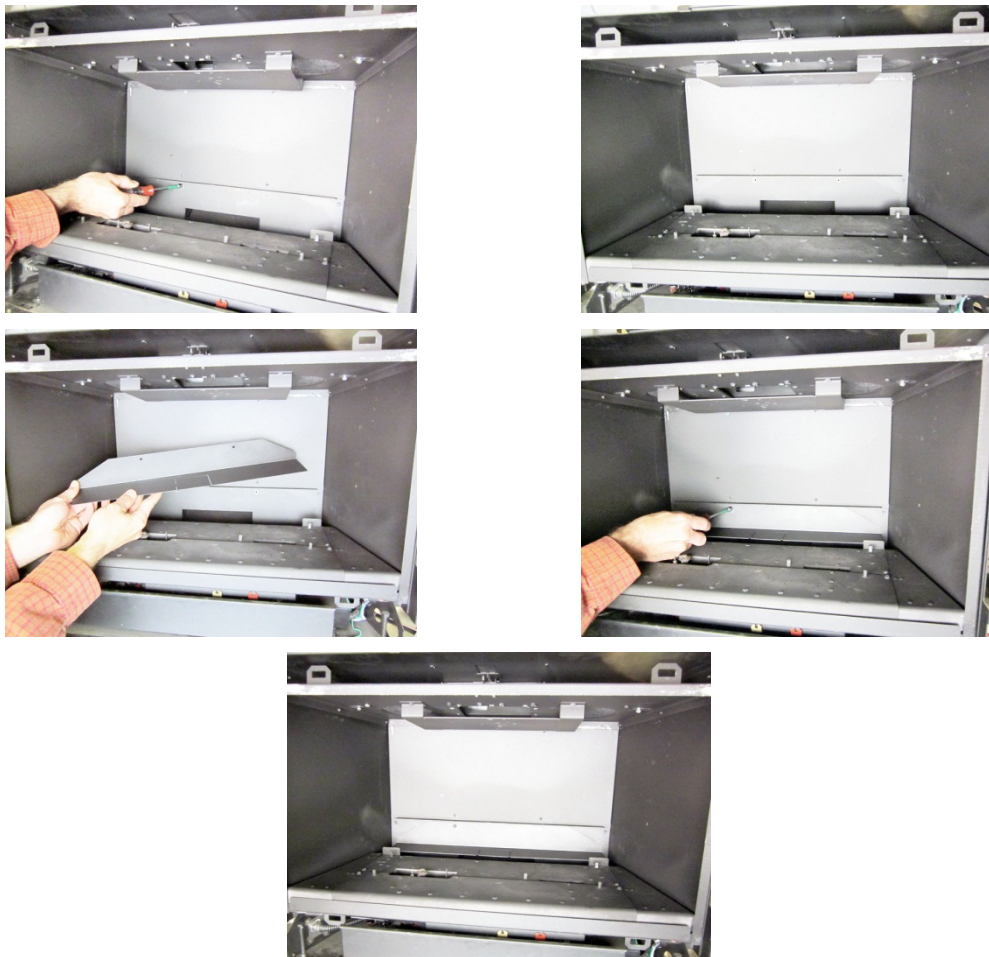
## DRIFTWOOD OR FYRE-STONES ONLY:

Disable the light by removing the bulb and laying the housing flat in the firebox cavity. Replace the screw from the light bracket into the firebox floor.



## DRIFTWOOD OR FYRE-STONES AIR DEFLECTOR INSTALLATION:

Attach the air deflector to the rear of the firebox cavity, using the screws already in place.



## TRADITIONAL LOG SET AIR DEFLECTOR INSTALLATION:

- a) Use tin snips to cut out the notch in the air deflector to allow it to fit around the light bracket.
- b) Attach the air deflector to the rear of the firebox cavity, using the screws already in place. Insert the air deflector with the screw holes facing up, so the notch fits around the light bracket, and then tilt it back so the screw holes are aligned with the holes provided in the firebox.

